



CeraVent®

CeraVent®

«

»

- . 2
- . 2
- . 3
- . 4
- . 5
- . 6
- . 7
- . 8
- . 8
- . 8
- . 8
- . 9
- . 9
- . 11
- . 11
- . 12
- . 12
- . 13
- . 14
- . 15

:
 /
 CeraVent® WAP
 CeraVent® SOP
 CeraVent®
 CeraVent®
 Watec®,
 Watec®,
 CeraVent®,
 CeraVent®, CeraVent®
 CeraVent®, CeraVent®, CeraVent®
 CeraVent®



- CeraVent® :
- CeraVent® 100 x100
- CeraVent®
- CeraVent®
- CeraVent® CeraVent®
- Watec® ST
- Watec® BW
- CeraVent® WA
- CeraVent® SO



/ 2) (. 7
 CeraVent®
 CeraVent®.
 CeraVent®
 CeraVent®
 CeraVent®
 CeraVent® CeraVent®
 «Floating-Buttering»
 CeraVent® WA
 CeraVent®
 CeraVent® SO



CeraVent®
()

- ❖
- ❖
- ❖
- ❖
- ❖
- ❖
- ❖
- ❖
- ❖

).

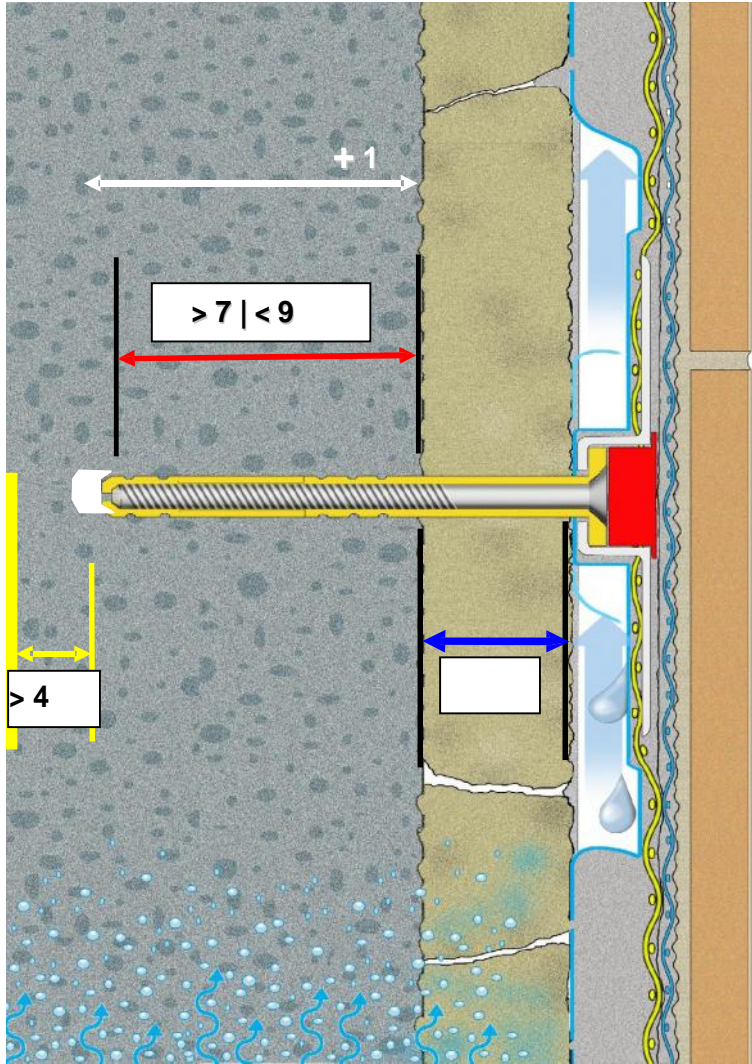
$$- \frac{3}{}$$

40 / ². ()



- ;
- ;
- , ;
- :
 - - / , . KS12
 - DIN 106
- :
 - , . MZ12 , DIN 105, 15%
 - , . MZ12 , DIN 105, 15%
- , DIN 4165 ().

-
- :
 - - / DIN 106, .
 - KSL6, 15%
 - , DIN 105, . MZ12,
 - $> 1 / ^3$
 - DIN 18151,
 - $> 2 / ^2$
 - DIN 18152,
 - $> 2 / ^2$
 - DIN 18152,
 - $> 2 / ^2$
- (,)
- (,)



.70

(, ,)

90

: 100 / 120 / 140 / 160.

4

12

() -

CeraVent®

.8

160



CeraVent®

() „ “

CeraVent®

- CeraVent®

(/ :)

- CeraVent®

CeraVent®.

CeraVent®

/ (, /)

_____ : CeraVent®

DIN 18195.



40 .
13 - 19 / ²,
21-27 .
8
8
10
40 .
/
0,2 .
20 ³/₄,
/ 40 .
100 ² 6 0,12 ², 15 .

(: +7 495 637 09 94).

C2 TE / TF / TFE (DIN EN 12004) S1 (DIN EN 12002).
Gutjahr,

: Ardex Baustoff GmbH (. „ CeraVent®
“).



3

CeraVent®

CeraVent®

» < 1:2.

2 5
« :

(10-25° C)

5° C
0° C

8-10
(ARDEX).

CeraVent®:

CeraVent® WA,

(ARDEX).

(4)

Cera Vent®.

CeraVent®

CeraVent® WA

2

CeraVent®:

CeraVent® SOP

CeraVent® SOP

CeraVent®,

.2

CeraVent®:

“ - CeraVent® “ ”

- CeraVent® ,

.) - CeraVent® 6 (8

()

CeraVent® 10

CeraVent®

laufenden

CeraVent®:

_____ :

/ 10 ~ 800

: 80-160 Ø 10

>15%); (Karat)

: 80-160

Torks T40 _____ ~ 1000

500-600 /

~ 800



CeraVent®

CeraVent®

CeraVent®.

CeraVent®

CeraVent®.

/ ,

CeraVent®

- CeraVent®.

CeraVent®

.

CeraVent®

/ ' ,

CeraVent®.

CeraVent®

CeraVent®

CeraVent®.

(: !).

50

CeraVent®

(..)

- CeraVent®

CeraVent®.

10 .
15 .
3 ,

4 / 2

ll.

(..

(.)

” “

—



Watec®

CeraVent®

Watec®

CeraVent®

Watec® BW.

ARDEX,

CeraVent®,

CeraVent®.

3-5 / 2.

(8-10).

1

8

Watec® BW.

3-5 / 2.



CeraVent®

(),

(„

CeraVent®.

(„

CeraVent®.

CeraVent®.

(„)

(Ø 12).

CeraVent®

CeraVent®

(.5

).

CeraVent®, / :

CeraVent®
ARDEX ()
(. 3-4) « »
CeraVent®, . 3-4
1-2
eraVent® 10
(< 2) (r > 8)
CeraVent®
1-2 CeraVent® _____
6-8 / 2.
(8-10). (. 5)

CeraVent®:

CeraVent®
CeraVent®, . .
(,)
CeraVent® 15
35



Floating» (/ «Buttering &
. 3 .) . « »
(r > 8) (< 2).
6 . ,
, ,
ARDEX.

4-6 / ².
(8-10).
CeraVent®
(.5 ,).

CeraVent® ,

_____ :

DIN 18195 «
DIN 18352 / 18333 / 18332,
ZDB- «
ZDB- «
ZDB- «

»,

»,

»,

»,

DNV 1.3 / 1.4 / 1.5 / 1.6 / 1.7,

2004,

DIN 18515 «
DIN EN 12004.

»,

: ARDEX.

04.06 | 04.06.