



> 1 %.

Watec® 4E AquaDrain® SD ( 2),

. 1,5 %.

(3-5 ).

1. AquaDrain® SD ( 2)

AquaDrain® SD ( 2)

10 – 15

2. AquaDrain® SD

2.1 AquaDrain® SD ( 2)

5-8 ).

SD ( 1),

.6  
.5 ².

AquaDrain®

2.2 \_\_\_\_\_ /

2-8 ).  
AquaDrain® SD ( 2)

AquaDrain® SD ( 2)

2.3 \_\_\_\_\_

Watec® 4E AquaDrain® SD ( 2)

27

SD ( 2) AquaDrain®

Watec® 4E

AquaDrain® SD ( 2)

. 2-5

AquaDrain® SD ( 2)

Watec® 4E,

Watec® Fin

3.

2.1 2.2  
AquaDrain® SD.  
AquaDrain® SD ( 2)

Watec® 4E,

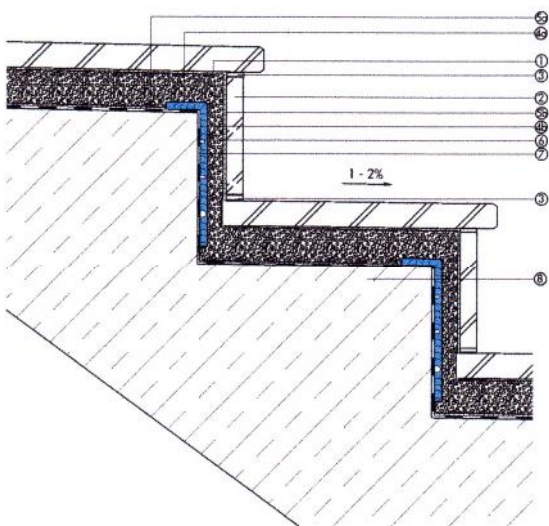
AquaDrain® SD ( ).

Watec® 4E

AquaDrain® SD

4.

AquaDrain® SD ( 2 )



1 / . 5 5a:

2 / .

3 5b: /

4 4a: : 6 AquaDrain® SD ( 2 )

( .. 5/8), 7 ( ):

4b: : , ..

( .. 3/5) 8

5.

Waterc® 4E  
AquaDrain® SD

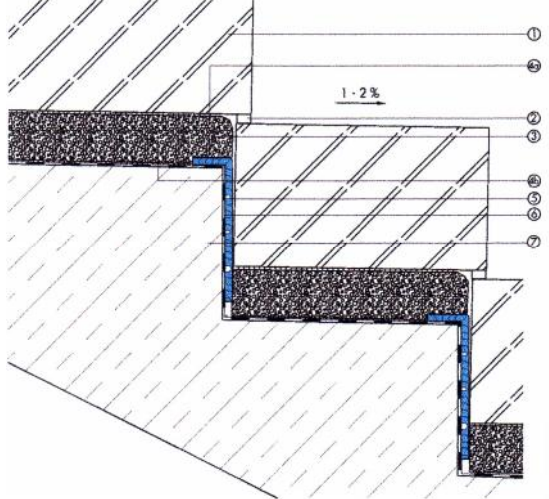
( 2)

CeraVent®

6.

( , )

AquaDrain® SD ( 2 )



1 / 5 AquaDrain® SD

2 / 6 ( ):

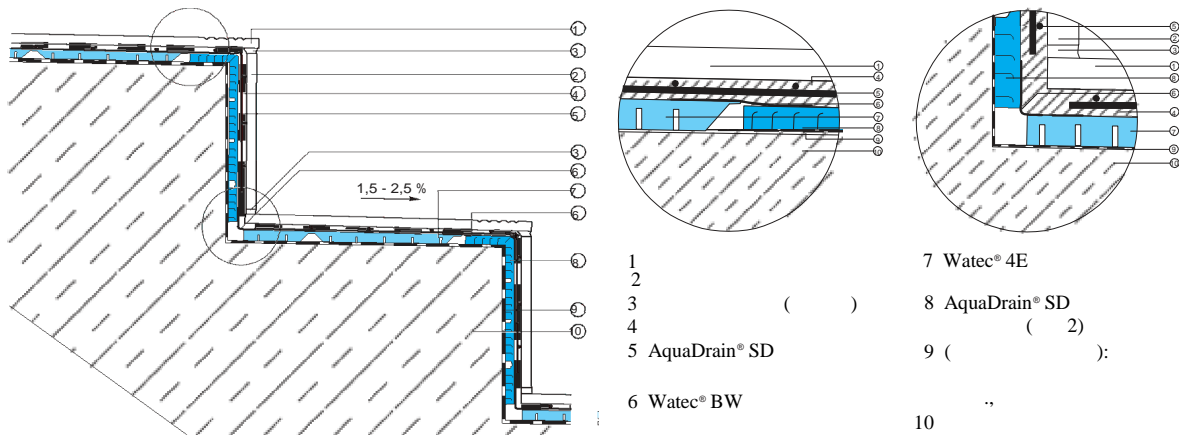
3 , ..

4 4a: ( .. 2-8 )

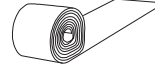
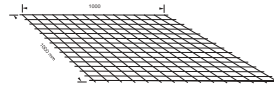
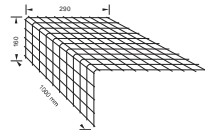
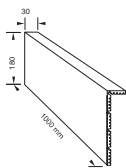
4b: /

8

## AquaDrain® SD ( 2) Watec® 4E



AquaDrain® SD - 2      AquaDrain® SD      -      AquaDrain® SD      -      Watec® BW      Watec® 4E



<p>AquaDrain® SD ( 2) -</p> <p>( ),</p> <p>- 8</p> <p>AquaDrain® SD</p> <p>38/38 (Ø 1,6 ),</p> <p>AquaDrain® SD ( 2): -30 °C +70 °C</p> <p>( - 80°C).</p>	<p>AquaDrain® SD ( 2): /5 ;</p> <p>1.000 , 180 , 310</p> <p>AquaDrain® SD: /5 ;</p> <p>1.000 , 160 , 290</p> <p>AquaDrain® SD: /10</p> <p>1.000 , 1.000</p> <p>Watec®4E</p> <p>Watec®4E.</p>
---	--

**AquaDrain® SD.**



GUTJAHR Innovative Bausysteme GmbH  
 Philipp-Reis-Str. 5-7 · D-64404 Bickenbach  
 Tel. +49 (0) 62 57/93 06-0 · Fax 93 06-31  
 www.gutjahr.com